

6224 29th Street SE
 Calgary, Alberta T2C 1W3
 TEL (403) 236-7738
 FAX (403) 287-7728

NO.	DATE			REVISION	BY
	D	MO	YR.		
NO.	DATE			ISSUED FOR	BY
	D	MO	YR.		

CLIENT INFO

MV SERIES
 QTY:
 (12'W x 20'L x 8'H)

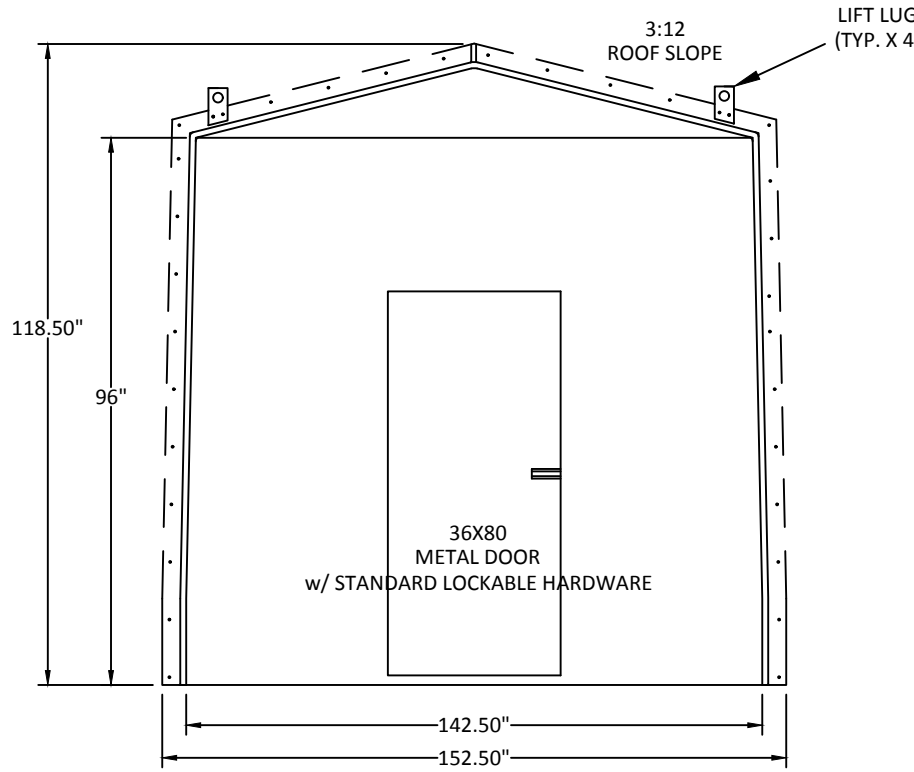
DRAWN BY MW REVIEWED BY TA
 SCALE NTS DATE 2019/04/16

SIGNATURE

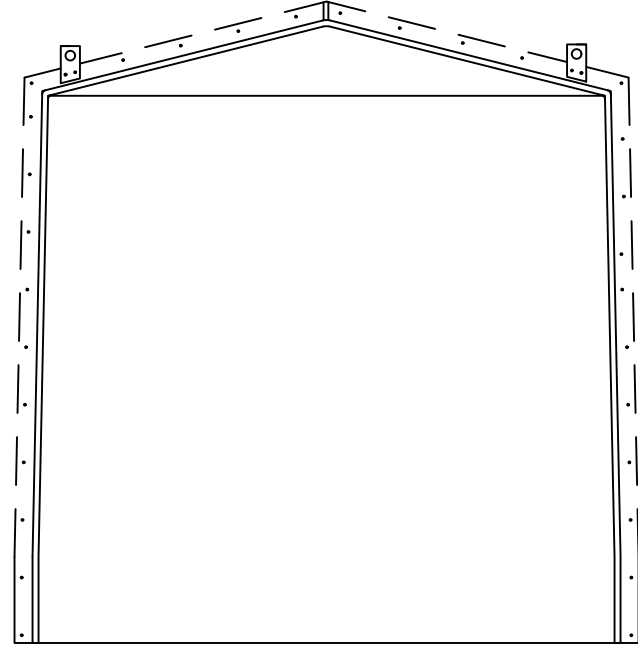
 DATE

ISSUE FOR APPROVAL PROJECT NO. --

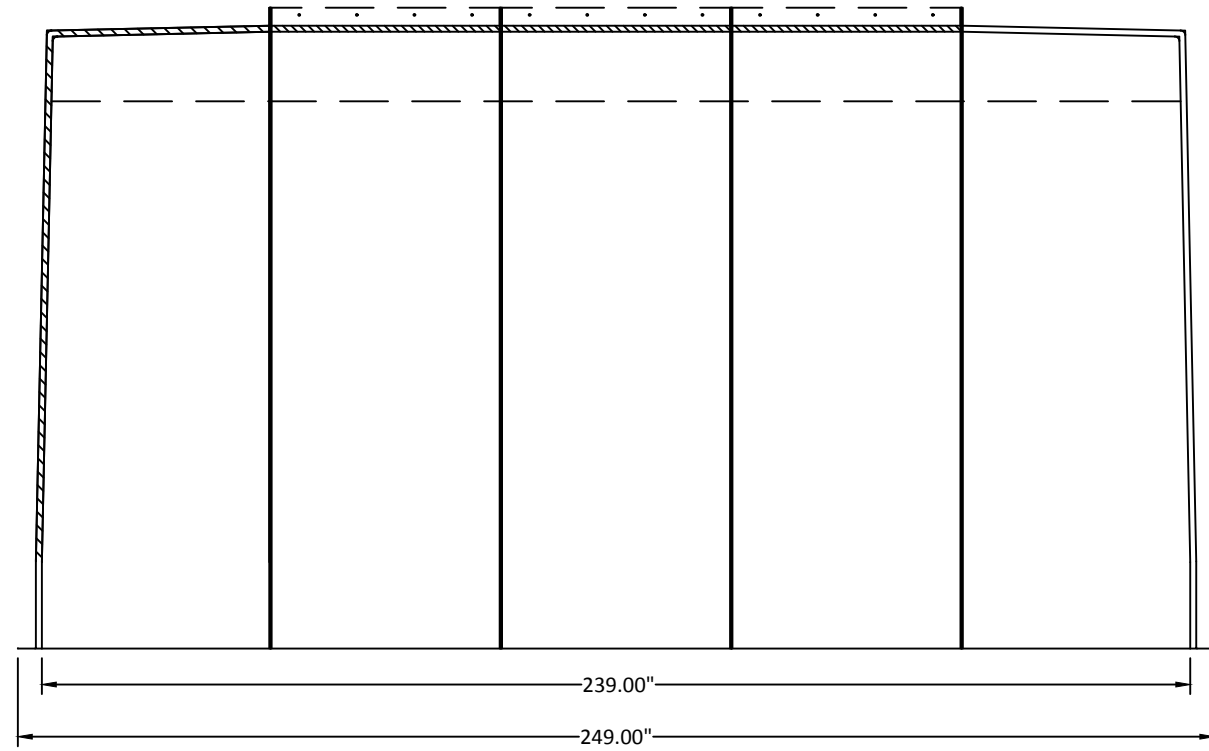
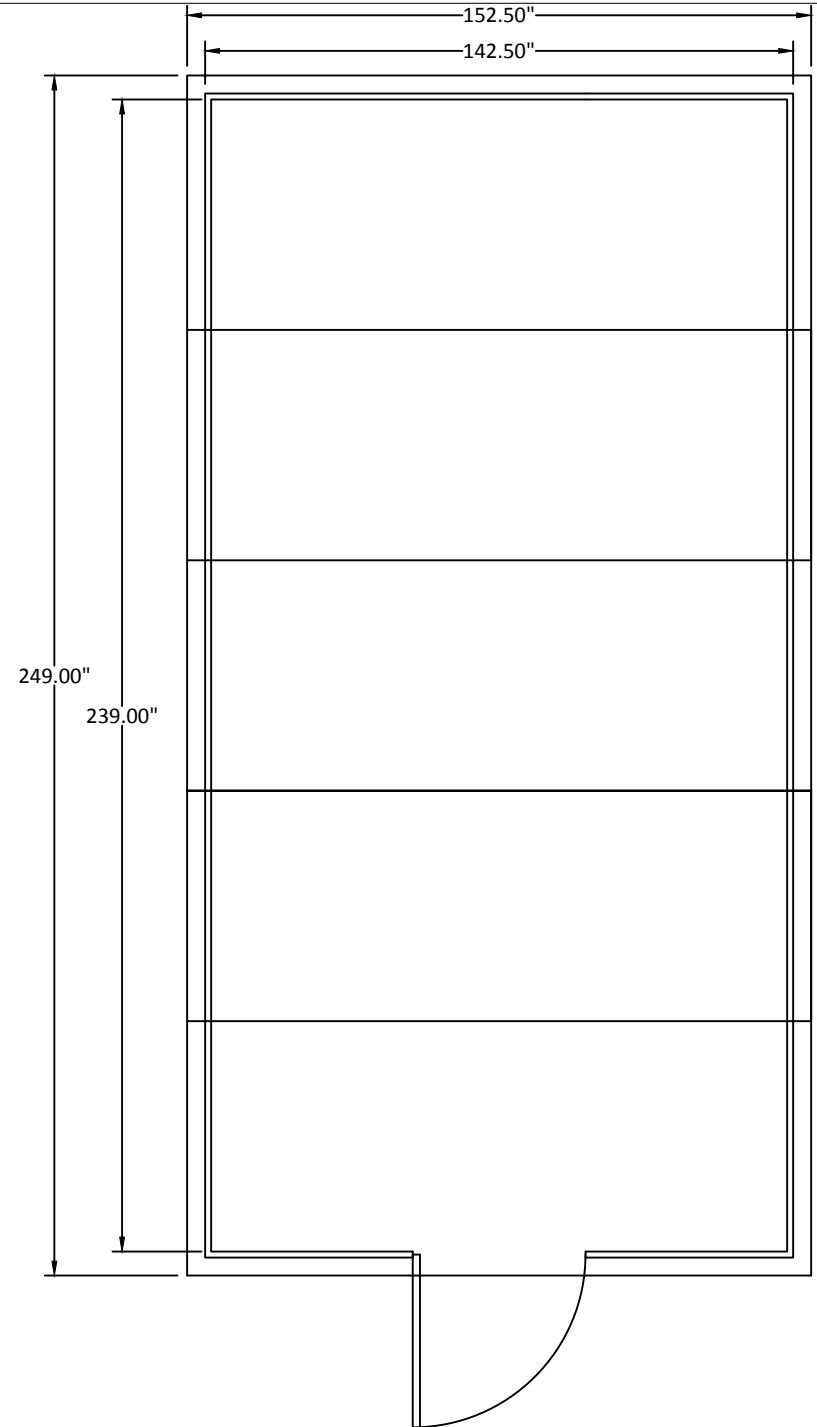
MV-12X20X8



FRONT ELEV.

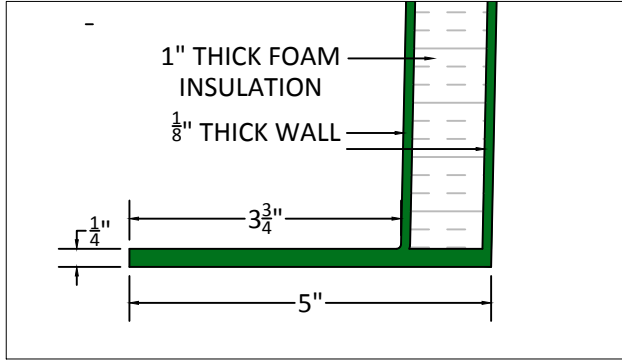


REAR ELEV.



SIDE ELEV

- NOTES:
 -EXTERIOR COLOR IS TAN
 -ALL MEASUREMENTS ARE NOMINAL
 -1" THICK FOAM INSULATION IN WALLS
 -FIBREGLASS REINFORCED PLASTIC WALLS



EXTERNAL FLANGE DETAIL