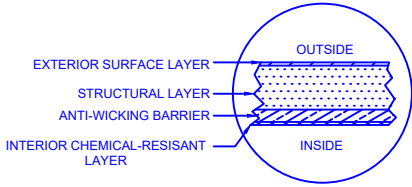


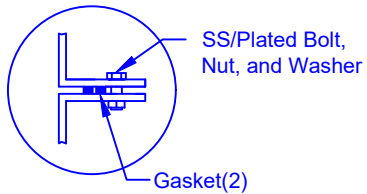
Specifications

Total Cylinder Thickness	0.500"
Total End Cap Thickness	0.645"
Inlet Height (C.L.)	N/A
Outlet Height (C.L.)	48"
Inlet Diameter	N/A
Outlet Diameter	2"
Rib Dimension (C to C)	17.25"
Rib Overlay Thickness	0.250"
Layers of Woven (Rib)	1

LAMINATE DETAIL



FLANGE CONNECTION DETAIL



SECTION-JOINT DETAIL



Optional Manway:
762 mm (30") dia. X
914 mm (36") height

30"D Cap Lid w/8"D
Poly screwout insert

Flanged Manway is
Bolted to Collar

762mm (30") dia. Collar
Bonded to Tank

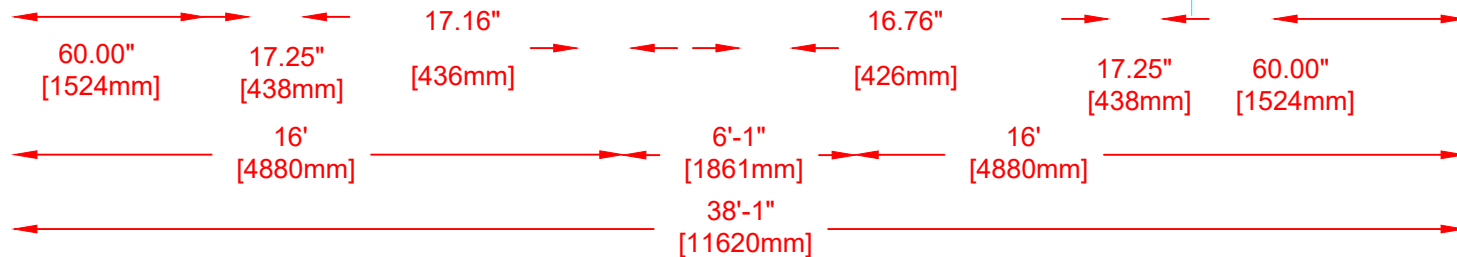
Structural Ribs

Lift Lug

2"D Outlet

Dia. 8'-6"
[2582mm]

B-11000W




Website: www.frpmfg.com
Toll Free: 1-866-722-6246

B11000W FIBREGLASS WATER CISTERN		DATE: 07-07-2022	DWG SCALE:
Overall Length:	Approx. 11,620mm (38'1")	BY: MPS	REV: 4
Overall Weight:	Approx. 2,472 kg (5,450 lbs)	BURIAL DEPTH: UP TO 7'	
Overall Capacity:	Approx. 50,394L (11,084 Imp Gal, 13,300 US Gal)	APPROVAL:	



Drinking Water
NSF/ANSI 61