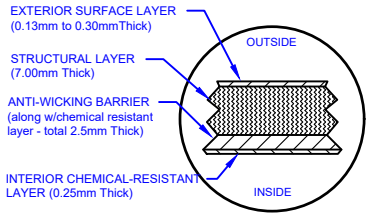


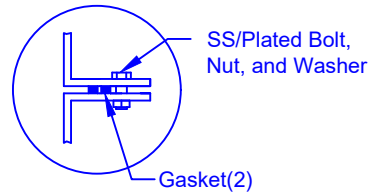
**LAMINATE DETAIL**



**SECTION-JOINT DETAIL**

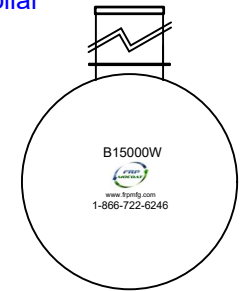
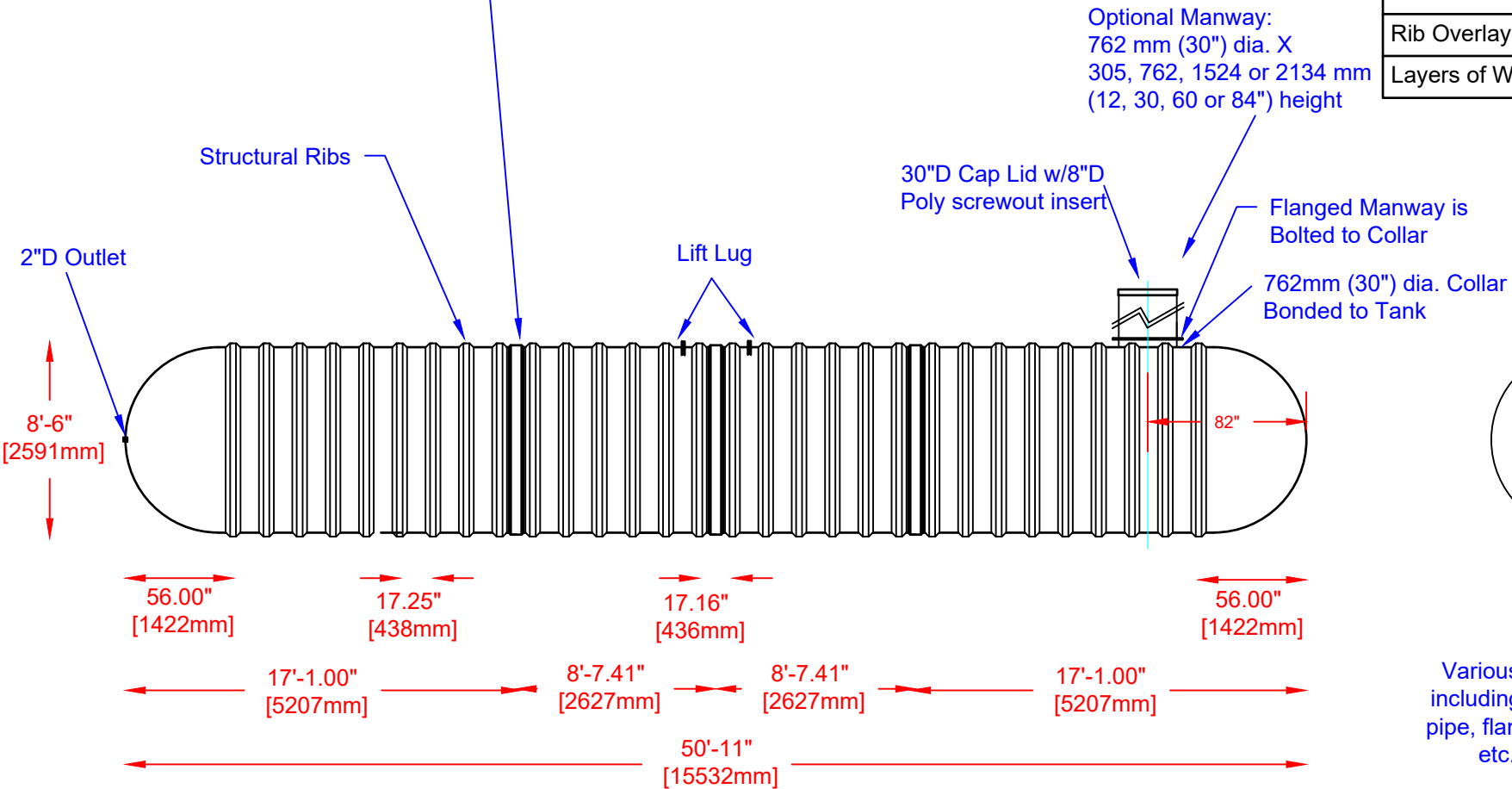


**FLANGE CONNECTION DETAIL**



**Specifications**

Cylinder Thickness	0.500"
End Cap Thickness	0.645"
Inlet Height (C.L.)	N/A
Outlet Height (C.L.)	48"
Inlet Diameter	N/A
Outlet Diameter	2"
Rib Dimension (C to C)	17.25"
Rib Overlay Thickness	0.250"
Layers of Woven (Rib)	1



Various fittings available including bulkhead fittings, pipe, flanged fittings, vents, etc. at extra cost.

Website: [www.frpmfg.com](http://www.frpmfg.com)  
Toll Free: 1-866-722-6246

B15000W FIBREGLASS WATER CISTERN		DATE: 07-07-2022	REV: 4
Overall Length:	Approx. 15,532mm (50'11")	BY: MPS	
Overall Weight:	Approx. 3,357 kg (7,400 lbs)	BURIAL DEPTH: UP TO 7'	
Overall Capacity:	Approx. 68,656 (15,102 Imp Gal, 18,122 US Gal)	APPROVAL:	

