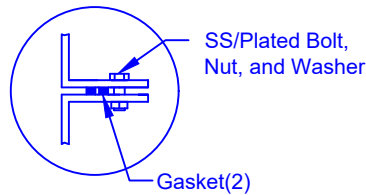


**FLANGE CONNECTION DETAIL**



**SECTION-JOINT DETAIL**



30"D Cap Lid w/8"D Poly screwout insert

Optional Manway:  
762 mm (30") dia. X  
305, 762, 1524 or 2134 mm  
(12, 30, 60 or 84") height

Lift Lug

Flanged Manway is Bolted to Collar

762mm (30") dia. Collar Bonded to Tank

2"D Outlet

8'-6"  
[2591mm]

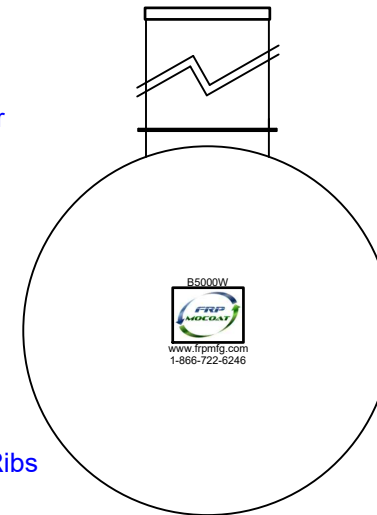
77"

Structural Ribs

51.83" [1316mm] 17.25" [438mm] 17.84" [453mm] 17.25" [438mm] 51.83" [1316mm]

9'-4" [2857mm] 9'-5" [2860mm]

18'-9"  
[5715mm]



- Various fittings available including bulkhead fittings, pipe, flanged fittings, vents, etc. at extra cost.

- Accessories available such as pump stand, 2nd manway, ladder, lock bar for lid, etc. at extra cost.

Specifications	
Total Cylinder Thickness	0.375"
Total End Cap Thickness	0.475"
Inlet Height (C.L.)	N/A
Outlet Height (C.L.)	48"
Inlet Diameter	N/A
Outlet Diameter	2"
Rib Dimension (C to C)	17.25"
Rib Overlay Thickness	0.250"
Layers of Woven (Rib)	1



Website: [www.frpmfg.com](http://www.frpmfg.com)  
Toll Free: 1-866-722-6246

**B5000W FIBREGLASS WATER CISTERN**

Overall Length:	Approx. 5,715mm (18'9" )
Overall Weight:	Approx. 975 kg (2,150 lbs)
Overall Capacity:	Approx. 22,886L (5,034 Imp Gal, 6,040 US Gal)

DATE: 07-07-2022	DWG SCALE:
BY: MPS	REV: 4
BURIAL DEPTH: UP TO 7'	
APPROVAL:	



Drinking Water  
NSF/ANSI 61