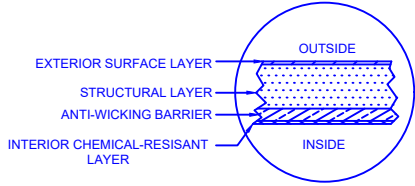
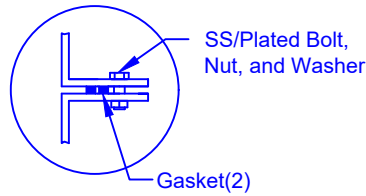


Specifications	
Total Cylinder Thickness	0.375"
Total End Cap Thickness	0.475"
Inlet Height (C.L.)	N/A
Outlet Height (C.L.)	48"
Inlet Diameter	N/A
Outlet Diameter	2"
Rib Dimension (C to C)	17.25"
Rib Overlay Thickness	0.250"
Layers of Woven (Rib)	1

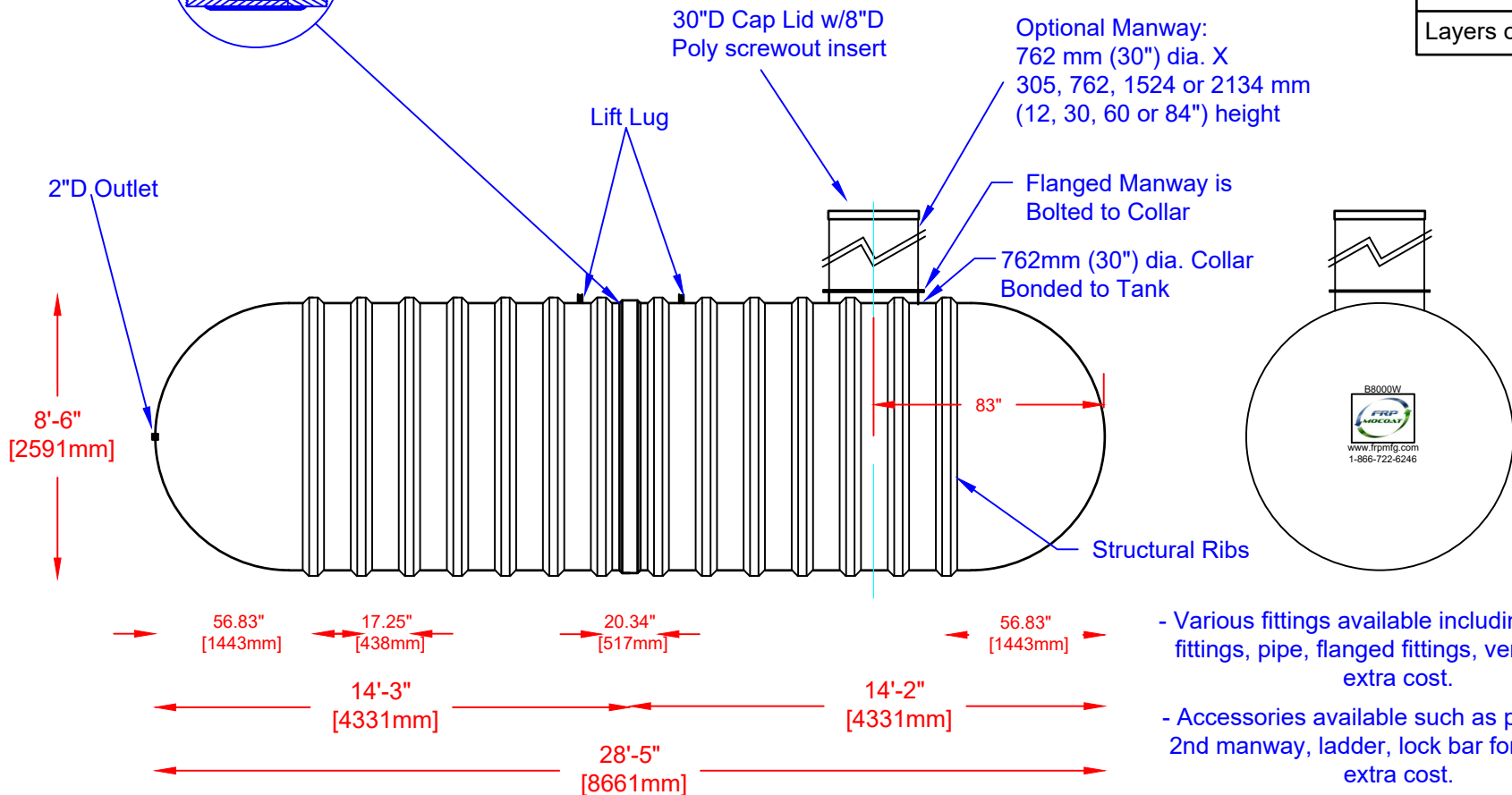
LAMINATE DETAIL



FLANGE CONNECTION DETAIL



SECTION-JOINT DETAIL



- Various fittings available including bulkhead fittings, pipe, flanged fittings, vents, etc. at extra cost.

- Accessories available such as pump stand, 2nd manway, ladder, lock bar for lid, etc. at extra cost.



Website: www.frpmfg.com
Toll Free: 1-866-722-6246

B8000W FIBREGLASS WATER CISTERN		DATE: 07-07-2022	DWG SCALE:
Overall Length:	Approx. 8,661mm (28'5")	BY: MPS	REV: 4
Overall Weight:	Approx. 1,406 kg (3,100 lbs)	BURIAL DEPTH: UP TO 7'	
Overall Capacity:	Approx. 36,642L (8,060 Imp Gal, 9,672 US Gal)	APPROVAL:	



Drinking Water
NSF/ANSI 61