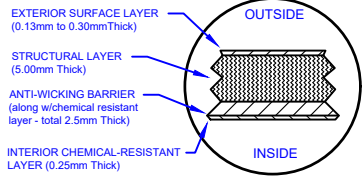
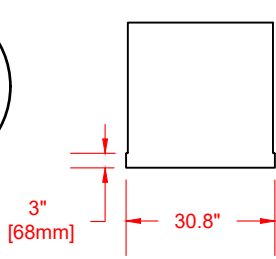


LAMINATE DETAIL



BELL RISER
(30" ht. shown)



SECTION-JOINT
DETAIL

Specifications

Cylinder Thickness	0.300"	Septic Chamber Depth	N/A
End Cap Thickness	0.300"	Septic Chamber Depth	N/A
Inlet Height (C.L.)	N/A	Effluent Chamber Depth	N/A
Outlet Height (C.L.)		Chamber Wall dimensions	
Inlet Diameter	N/A	Height:	N/A
Outlet Diameter	2"	Thickness:	N/A
Rib Dimension (C to C)	16.5"	Opening Diameter:	N/A

30"D Lid w/8"D poly vented screw out insert.

30"D x 36"H manway bonded directly to tank

Structural Rib

31" [785mm]

5' [1532mm] i.d.
5'-6" [1682mm] o.d.

38" [975mm]

16.5" [419mm]

39" [983mm]

14' [4268mm]

Outlet:
2"D Female
NPT Bulkhead

66" [1676mm]



Website: www.frpmfg.com
Toll Free: 1-866-722-6246

W1500-BONDED FIBREGLASS WATER CISTERN

DATE: 06-27-2022 REV: 2

BY: MPS

Overall Length: Approx. 4,268mm (14')

BURIAL DEPTH: 7 Ft

Overall Weight: Approx. 340 kg (750 lbs)

DATE:

Overall Capacity: Approx. 6,819L (1,500 Imp Gal, 1,800 US Gal)

APPROVAL:



Drinking Water
NSF/ANSI 61