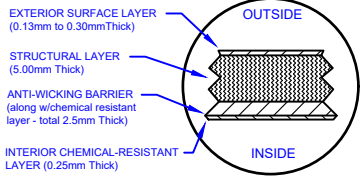
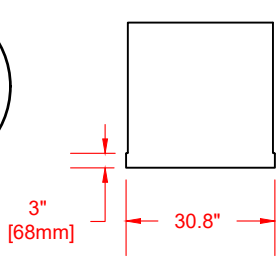


LAMINATE DETAIL



BELL RISER  
(30" ht. shown)



SECTION-JOINT  
DETAIL

# Specifications

Cylinder Thickness	0.300"	Septic Chamber Depth	N/A
End Cap Thickness	0.300"	Septic Chamber Depth	N/A
Inlet Height (C.L.)	N/A	Effluent Chamber Depth	N/A
Outlet Height (C.L.)	2"	Chamber Wall dimensions	
Inlet Diameter	N/A	Height:	N/A
Outlet Diameter	2"	Thickness:	N/A
Rib Dimension (C to C)	16.5"	Opening Diameter:	N/A

30"D Lid w/8"D poly vented screw out insert.

30"D x 30"H manway bonded directly to tank

Structural Rib

31" [785mm]

5' [1532mm] i.d.  
5'-6" [1682mm] o.d.

2"D Female Bulkhead

W1750  
www.frpmfg.com

38" [975mm]

16.5" [419mm]

38" [975mm]

66" [1676mm]

16' [4877mm]



Website: [www.frpmfg.com](http://www.frpmfg.com)  
Toll Free: 1-866-722-6246

## W1750-BONDED FIBREGLASS WATER CISTERN

DATE: 06-27-2022 REV: 3

BY: MPS

Overall Length: Approx. 4,877mm (16')

BURIAL DEPTH: 7 Ft

Overall Weight: Approx. 397 kg (875 lbs)

DATE:

Overall Capacity: Approx. 7,955L (1,750 Imp Gal, 2,100 US Gal)

APPROVAL:



Drinking Water  
NSF/ANSI 61