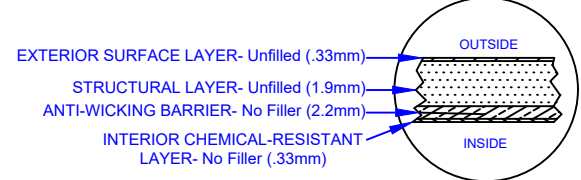


| LABEL LOCATIONS | | | | | |
|-----------------|-----|----------------|------|-----|-------------|
| ITEM | QTY | DESCRIPTION | ITEM | QTY | DESCRIPTION |
| A | 1 | NAME PLATE | B | 1 | INLET |
| C | 1 | OUTLET | D | 1 | DANGER |
| E | 2 | LIFTING HANDLE | | | |

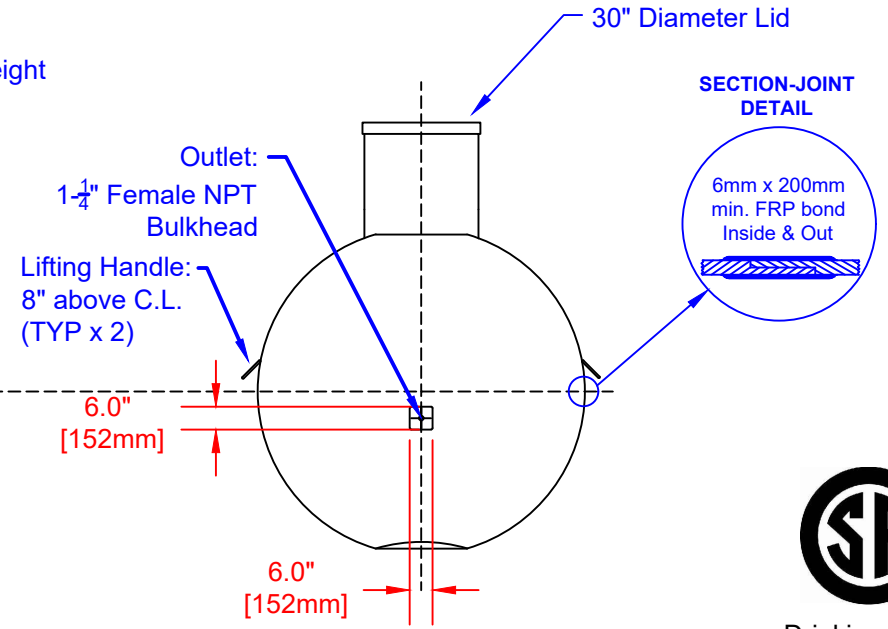
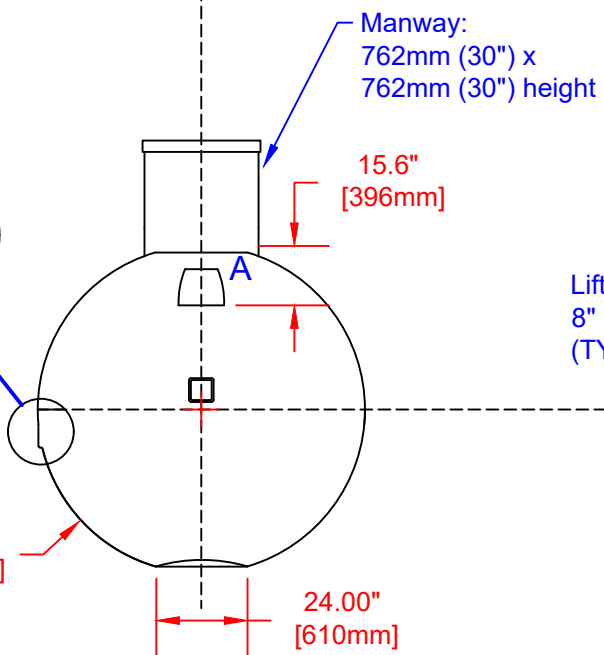
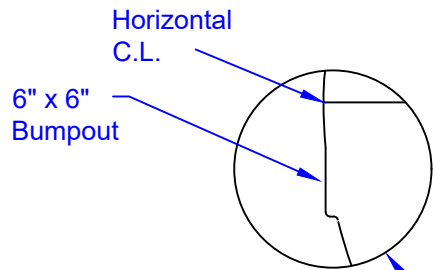
* TANK COMES FULLY ASSEMBLED FROM FACTORY *

* PVC FITTINGS ARE CSA CERTIFIED

LAMINATE DETAIL



Note:
6" x 6" Flat Bumpout that is 4" below Horizontal C.L.



Drinking Water
NSF/ANSI 61

| | | | | |
|--|------------------|-----------|------------|--|
| WB1200 FIBREGLASS WATER CISTERN | DATE: 06-27-2022 | DATE: | DWG SCALE: | Overall Diameter: 2,210mm (87") |
| | BY: MPS | APPROVAL: | REV: A | Approx. Weight: 182kg (400lbs) |
| | | | | Holding Capacity: 5,655L (1,244 Imp Gal, 1,493 US Gal) |